

Accounts Receivable

The Accounts Receivable dashboard contains comprehensive accounts receivable data accessible in different data visualizations, including cards, tables, and data insights. This dashboard provides comparison data and can be customized to view specific facilities, payers, and providers.

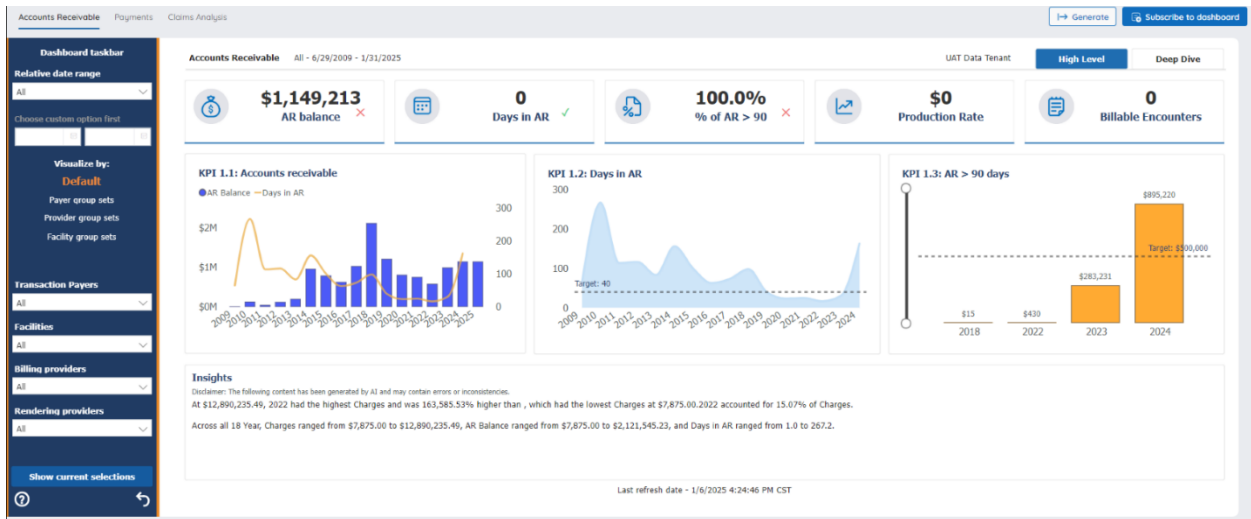
Use the dashboard tools to Export and Subscribe to the dashboard.

There are two views within the Accounts Receivable dashboard:

- **High Level**
- **Deep Dive**

High Level

The High Level tab provides the cumulative and overall accounts receivable data for the health center. Use the [dashboard taskbar and filters](#) to specify the needed date, payer, provider, and facility information.



Important Notes:

- The dashboards are based on the Key Performance Indicators (KPIs) set in Admin settings.
- The Production Rate and Billable Encounters data visualizations are calculated by the Date of Service (DOS).

Accounts receivable cards

The Accounts receivable cards display key metrics and single data points in a clear, concise manner. They highlight valuable information about accounts receivable, such as Days in AR and Encounter totals.

Note: If a KPI card displays a 0, it means that there is no data for that specific metric.

The cards at the top of the accounts receivable dashboard display the following key metrics.

AR balance: This displays the accounts receivable balance for the current month (or last month) compared to the previous for the entered date range. It calculates using the date of entry.

- For example, if you selected the previous year, then the card would show the AR Balance for December in the previous year compared against November in the previous year.
- Calculation formula: AR balance = [Previous period AR Balance] + [Current period AR Balance]; Balance = Charges – Payments – Adjustments

Days in AR: This shows the number of days in AR for the current month (or last month) compared to the previous for the entered date range.

- For example, if you selected the previous year, then the card would show the Days in AR for December in the previous year compared against November in the previous year.
- Calculation Formula: Days in AR = [AR Balance for the period] / [Average Daily Charges for the period]

% of AR > 90: This shows the percentage of AR over 90 days compared to the target.

- Calculation Formula: % of AR > 90 = [AR balance of encounters aging over 90 days] / [Total AR Balance]

Production Rate: This displays the production rate for the current month (or last month) compared to the previous for the entered date range.

- For example, if you selected the previous year, then the card would show the production rate for December in the previous year compared against November in the previous year.
- Calculation Formula: Production rate = [Sum of all charge transactions by entry date for the selected period] / [Total number of encounters for the selected period]

Billable Encounters: This displays the total Billable Encounters for the current month (or last month) compared to the previous for the entered date range.

- For example, if you selected previous year, then the card would show the total Billable Encounters for December in the previous year compared against November in the previous year.
- Calculation Formula: Total Encounters = [Count of unique billable encounters within the selected date range]



Insights

Insights, a smart narrative, analyzes the health center’s accounts receivable data and provides you with the trends and highlights.

Important Note: Insights are generated using an AI system and may contain errors or inconsistencies as the underlying model matures.

Insights

At 12,890,235.49, 2022 had the highest Charges and was 33,053.09% higher than 2009, which had the lowest Charges at 38,880.95.

Charges and total AR Balance are positively correlated with each other.

2022 accounted for 15.07% of Charges.

Across all 16 Year, Charges ranged from 38,880.95 to 12,890,235.49, AR Balance ranged from \$5,697.50 to \$2,113,670.23, and Days in AR ranged from 16.3 to 251.7.

Accounts receivable charts and tables

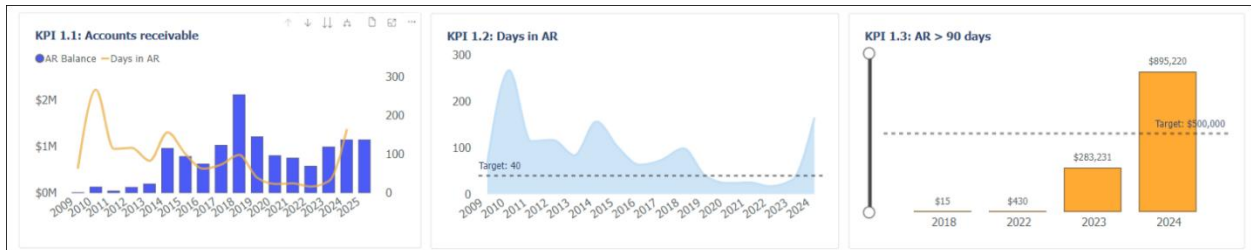
The Accounts receivable dashboard uses charts and tables data visualizations to display the AR key metrics. The various [Information tools](#) allow you to review specific data points or drill through and drill down for details.

The AR key metrics displayed are:

KPI 1.1: Accounts receivable

KPI 1.2: Days in AR

KPI 1.3: AR > 90 days



Deep Dive

The Deep Dive tab provides a detailed look at the accounts receivable numerical data. It shows the AR data in a column format using trend icons and callout colors.

KPI 1.4: Accounts receivable analysis by all transaction payers by date of entry								Ticket number	All
Year	AR Balance	Days in AR	Charges	Chgs YoY%	Payments	Adjustments	Chgs - Pmts & Adjs		
2025	\$1,149,213.02	163	\$2,584,414.24	-100.0%	\$1,468,846.28	\$961,265.72	\$154,302.24		
2024	\$1,149,213.02	163	\$11,792,032.26	-78.08%	\$5,689,834.54	\$5,492,225.80	\$409,971.52		
2023	\$994,910.78	31	\$12,890,235.49	16.72%	\$6,815,363.72	\$6,246,989.97	(\$172,118.20)		
2022	\$584,939.26	17	\$11,043,608.72	-11.87%	\$7,454,265.39	\$3,641,324.14	(\$51,980.81)		
2021	\$757,057.46	25	\$12,531,511.93	11.65%	\$8,380,264.65	\$4,556,729.06	(\$405,481.78)		
2020	\$809,038.27	24	\$11,224,159.65	42.85%	\$6,472,196.01	\$5,658,988.82	(\$907,025.18)		
2019	\$1,214,520.05	39	\$7,857,217.57	53.36%	\$4,682,907.99	\$2,086,090.67	\$1,088,128.91		
2018	\$2,121,545.23	99	\$5,023,521.13	39.61%	\$3,243,988.86	\$1,477,144.26	\$402,388.01		
2017	\$1,033,416.32	74							

KPI 1.5: Days in AR by all transaction payers by date of entry							
Payer	Mar 24	Feb 24	Jan 24	Dec 23	Nov 23	Oct 23	May [®]
Aarp United Medicare Preferred	4,038		-248,628		240,992		23,838
Acadia Insurance							
Administrative Concepts Inc Continental Care						-52	
Advantra Freedom							
Aetna Hc	75	27	63	28	8	42	55
Aetna Medicare	64	55	47	60	56	41	30

KPI 1.6: AR balance by all transaction payers by date of entry						
Payer	Jan 25	Dec 24	Nov 24	Oct 24	Sep 24	Au [®]
Aarp United Medicare Preferred	\$84,671.05	\$84,671.05	\$84,671.05	\$84,671.05	\$84,671.05	\$84,671.05
Acadia Insurance	\$0.00	\$0.00	\$0.00	\$0.00	\$0.00	\$0.00
Administrative Concepts Inc Continental Care	(\$452.80)	(\$452.80)	(\$452.80)	(\$452.80)	(\$452.80)	(\$452.80)
Advantra Freedom	\$0.00	\$0.00	\$0.00	\$0.00	\$0.00	\$0.00
Aetna Hc	\$6,064.66	\$6,064.66	\$6,064.66	\$6,064.66	\$6,064.66	\$6,064.66

The AR key metrics displayed are:

KPI 1.4: Accounts receivable analysis by all transactions by the date of entry

- **Blue:** refers to the Charges.
- **Green:** refers to the Payments.
- **Red:** refers to the data within the field that requires attention. For example, the monies shown are not aligned with the set KPIs.

- **Yellow:** refers to the Adjustments.

KPI 1.5: Days in AR by all payers by all transactions by the date of entry

- Green if $\leq -5\%$ of the target
- Yellow if $\pm 5\%$ of the target
- Red if $+ 5\%$ of the target

KPI 1.6: AR balance by all payers by all transactions by the date of entry

Trend icons

Down arrow: The red down arrow indicates a negative or downward data trend.

Up arrow: The green up arrow indicates a positive or upward data trend.

Sideways arrow: The yellow right arrow indicates no noteworthy upward or downward trend because the more recent data point is within $\pm 1\%$ of the previous data point.

Exclamation point: The yellow exclamation point is a warning indicator for the data listed; within $\pm 5\%$ of the target.

Check mark: The green check mark indicates that the data listed has met the KPI goal.

X: The red X indicates that the data listed has **not** met the KPI goal.